



Cable ID: 01-0152

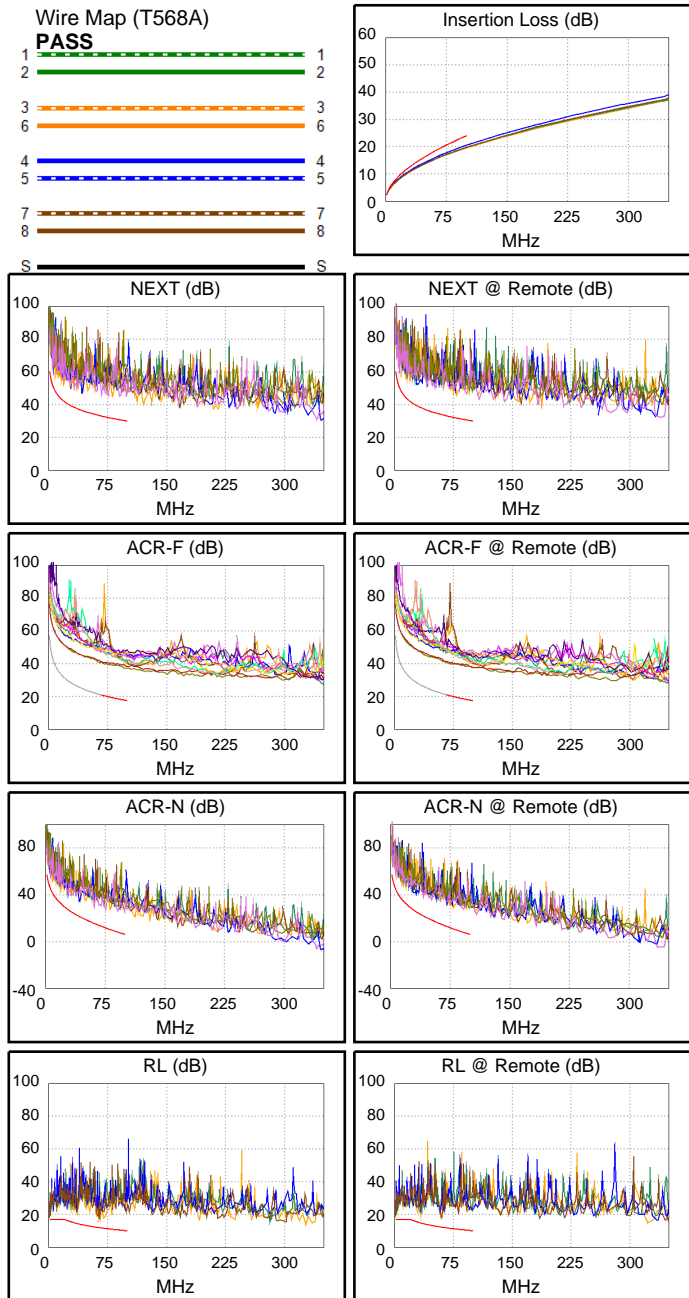
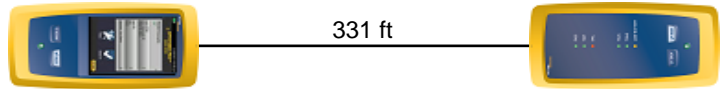
Date / Time: 12/19/2019 04:11:17 PM
Headroom 8.5 dB (NEXT 12-36)
Test Limit: TIA Cat 5e Channel
 Cable Type: Cat 5e F/UTP
 NVP: 69.0%

Operator: SDS
 Software Version: V6.0 Build 6
 Limits Version: V7.0
 Calibration Date:
 Main (Module): 08/09/2019
 Remote (Module): 08/08/2019

Test Summary: PASS

Model: DSX-5000
 Main S/N: 2525693
 Remote S/N: 2552531
 Main Adapter: DSX-CHA004
 Remote Adapter: DSX-CHA004

Length (ft), Limit 328	[Pair 12]	331
Prop. Delay (ns), Limit 555	[Pair 36]	508
Delay Skew (ns), Limit 50	[Pair 36]	20
Resistance (ohms)	[Pair 45]	20.38
Insertion Loss Margin (dB)	[Pair 45]	3.5
Frequency (MHz)	[Pair 45]	100.0
Limit (dB)	[Pair 45]	24.0



Worst Case Margin Worst Case Value

PASS	MAIN	SR	MAIN	SR
Worst Pair	12-36	12-36	45-78	12-36
NEXT (dB)	8.5	10.4	12.4	14.0
Freq. (MHz)	8.6	8.5	75.5	79.0
Limit (dB)	48.1	48.2	32.2	31.8
Worst Pair	12	78	45	36
PS NEXT (dB)	10.9	11.7	15.5	17.0
Freq. (MHz)	8.6	6.0	91.8	95.3
Limit (dB)	45.1	47.7	27.7	27.4

PASS	MAIN	SR	MAIN	SR
Worst Pair	36-45	36-45	36-45	36-45
ACR-F (dB)	19.2	19.2	19.6	20.0
Freq. (MHz)	71.8	15.1	100.0	99.5
Limit (dB)	20.3	33.8	17.4	17.4
Worst Pair	45	36	45	36
PS ACR-F (dB)	20.8	20.8	21.0	20.9
Freq. (MHz)	97.8	1.0	100.0	100.0
Limit (dB)	14.6	54.4	14.4	14.4

N/A	MAIN	SR	MAIN	SR
Worst Pair	12-36	12-36	45-78	45-78
ACR-N (dB)	9.3	11.3	19.5	20.0
Freq. (MHz)	8.6	8.5	99.0	91.8
Limit (dB)	41.5	41.6	6.3	7.8
Worst Pair	78	78	45	36
PS ACR-N (dB)	11.5	12.3	18.8	21.1
Freq. (MHz)	6.1	6.0	91.8	95.3
Limit (dB)	42.0	42.2	4.8	4.1

PASS	MAIN	SR	MAIN	SR
Worst Pair	12	12	12	12
RL (dB)	5.6	4.6	5.9	4.6
Freq. (MHz)	2.4	60.0	70.8	60.0
Limit (dB)	17.0	12.2	11.5	12.2

Compliant Network Standards:
 10BASE-T 100BASE-TX 100BASE-T4
 1000BASE-T 2.5GBASE-T ATM-25
 ATM-51 ATM-155 100VG-AnyLan
 TR-4 TR-16 Active TR-16 Passive