



Cable ID: 01-0054

Date / Time: 12/25/2019 03:26:49 PM

Headroom 6.4 dB (NEXT 36-45)

Test Limit: TIA Cat 5e Channel

Cable Type: Cat 5e U/UTP

NVP: 69.0%

Operator: SDS

Software Version: V6.1 Build 3

Limits Version: V7.1

Calibration Start Date:

Main (Module): 05/07/2019

Remote (Module): 05/07/2019

Test Summary: PASS

Model: DSX-8000

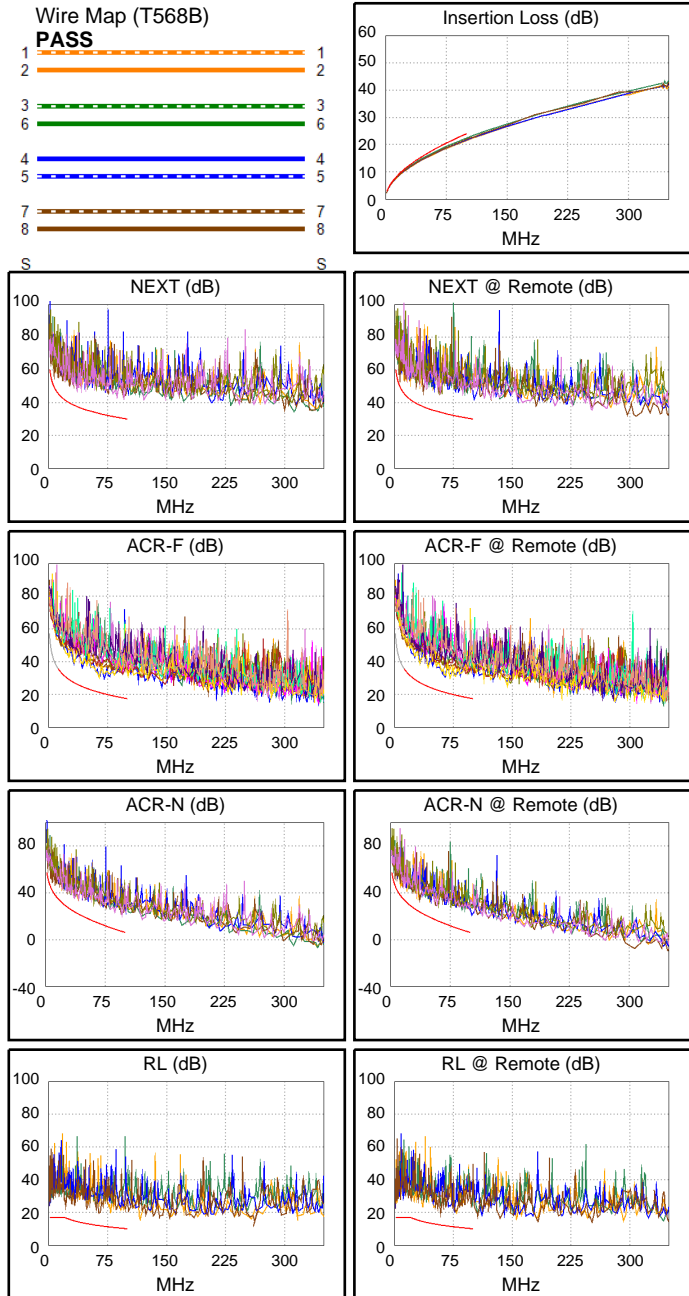
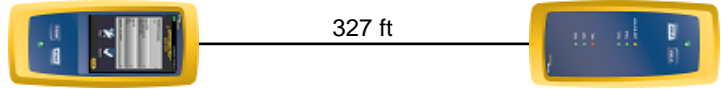
Main S/N: 1852004

Remote S/N: 1851494

Main Adapter: DSX-CHA804

Remote Adapter: DSX-CHA804

Length (ft), Limit 328	[Pair 78]	327
Prop. Delay (ns), Limit 555	[Pair 36]	499
Delay Skew (ns), Limit 50	[Pair 36]	17
Resistance (ohms)	[Pair 36]	21.95
Insertion Loss Margin (dB)	[Pair 36]	1.6
Frequency (MHz)	[Pair 36]	100.0
Limit (dB)	[Pair 36]	24.0



Worst Case Margin Worst Case Value

PASS	MAIN	SR	MAIN	SR
Worst Pair	36-45	36-45	45-78	36-45
NEXT (dB)	7.9	6.4	12.0	11.0
Freq. (MHz)	7.0	6.9	96.5	57.5
Limit (dB)	49.6	49.7	30.3	34.2
Worst Pair	36	45	45	45
PS NEXT (dB)	9.9	8.9	14.3	11.8
Freq. (MHz)	6.9	6.9	96.5	58.3
Limit (dB)	46.7	46.7	27.3	31.1

PASS	MAIN	SR	MAIN	SR
Worst Pair	12-78	12-78	12-78	78-12
ACR-F (dB)	9.3	9.0	9.8	10.4
Freq. (MHz)	70.8	64.3	77.0	77.3
Limit (dB)	20.4	21.2	19.7	19.6
Worst Pair	12	12	78	12
PS ACR-F (dB)	11.6	11.7	12.5	11.7
Freq. (MHz)	64.3	70.5	77.0	70.5
Limit (dB)	18.2	17.4	16.7	17.4

N/A	MAIN	SR	MAIN	SR
Worst Pair	36-45	36-45	45-78	12-78
ACR-N (dB)	8.3	6.7	14.2	17.9
Freq. (MHz)	7.0	6.9	96.5	100.0
Limit (dB)	43.6	43.8	6.8	6.1
Worst Pair	36	36	45	78
PS ACR-N (dB)	10.0	9.1	16.6	18.9
Freq. (MHz)	6.9	6.9	97.0	100.0
Limit (dB)	40.8	40.8	3.7	3.1

PASS	MAIN	SR	MAIN	SR
Worst Pair	78	78	78	78
RL (dB)	7.1	7.3	7.6	8.5
Freq. (MHz)	21.5	58.8	64.0	77.0
Limit (dB)	16.7	12.3	11.9	11.1

Compliant Network Standards:
 10BASE-T 100BASE-TX 100BASE-T4
 1000BASE-T ATM-25 ATM-51
 ATM-155 100VG-AnyLan TR-4
 TR-16 Active TR-16 Passive